

KC

Kart Components



TRADE PRICE LIST 2010

KART COMPONENTS MANUFACTURING LTD



MX-BRAKES

MX-BRAKES



Welcome to our 2010 Price List, please read the following information:

All prices quoted are excluding VAT & Delivery.

Please note that as we are a manufacturing company, we process orders as they arrive at our sales desk. We request that you order well in advance to ensure a satisfactory delivery date.

It is a condition of purchase that Kart Components (Manufacturing) Ltd, will not accept any liability for accidents or injuries arising from the use of our equipment.

Prices are subject to change without prior notice, however we will endeavour to keep you up-to-date.

We now accept most major Credit / Debit Cards.

Deliveries to England, Wales & Scotland (Exc. H'Lands & Isles)
Prices are per parcel up to 25Kgs
£11.50 per parcel.

European Deliveries (2-5 day)
Prices are per parcel up to 25Kgs
Germany, France, Luxembourg, Belgium, Holland £26.50
Denmark, Finland, Ireland, Italy, Sweden £31.50
Austria, Greece, Portugal, Spain £36.50

Please note that these prices are only a guide and are subject to change according to weight and destination, and do not include any Local Taxes or Duties.

Other Country destinations will be calculated on receipt of order, as weights may vary.

Express Service available on request.

NB: Whilst we do all we can, we do not guarantee same day dispatch, due to stock shortages etc....

JET-WHEELS**JET-WHEELS**

Jet Wheels are precision CNC machined all over to a superb finish. We manufacture one of the widest range of wheels on the market. All wheels are available in either silver, black and drilled for bead retainers. All wheels come complete with valves and bearings and are available in silver & black.



Direct Mounted Wheels

100mm
Central100mm
Offset100mm
Super Offset115mm
Central115mm
Offset115mm
Super Offset120mm
Offset

Hub Fixing Wheels



100mm

110mm

120mm

130mm

150mm

175mm

200mm

Description	Standard Price	with bead retainers
<i>JET-WHEELS Silver</i>	£16.15 per front £15.85 per rear	+ £2.00 per wheel
<i>JET-WHEELS Black</i>	+ £1.75 on above	+ £2.00 per wheel

Evolution & Low Volume Wheels

120mm
Offset130mm
Offset120mm
50mm Offset

175mm

200mm



Low Volume

Description	Standard Price	With bead retainers
<i>Evolution Wheels Silver</i>	£17.20 per front & rear	+ £2.00 per wheel
<i>Evolution Wheels Black</i>	+ £1.75 on above	+ £2.00 per wheel
<i>Low Volume Wheels 130mm / 200mm</i>	£87.00 per set	£89.00 per set



Kart Components manufacture a wide range of rental wheels to suit most rental karts on the market. These wheels are machined twice as thick as the racing wheels and are available in a range of bearing configurations. Fronts available in 115mm offset or central bearing.



Front & Rear Rental Wheels



Description	Price
Front Rental Wheels inc. 17mm Bearings	£17.20 each
Front Rental Wheels inc. 20mm Bearings	£17.40 each
Front Rental Wheels inc. 17/20mm Bearings	£17.40 each
Rear Rental Wheels, sizes: 120/150/175/200mm	£15.85 each

Wheel Accessories

Description	Price	100+ Price
6003zz 17mm I/D, 35mm O/D Bearings	Pack of 10 £6.50	£0.50 each
6203rs 17mm I/D, 40mm O/D Bearings	Pack of 10 £8.50	£0.80 each
6004zz 20mm I/D, 42mm O/D Bearings	Pack of 10 £8.50	£0.80 each
Valves	£0.78 each	£0.50 each
Bead Retaining Screws	Pack of 3 £2.92	N/A

Please note that no further discount applies for items listed in this section.

The **MX-BRAKES** range offers superb value for money and excellent reliability. All **MX-BRAKES** are fully self adjusting and come complete with:

- High Temperature Seals
- Aeroquip Hose
- Dot 5 Silicone Fluid
- Quick Release Pads



- Choice of Pad Compounds
- Full Service Back Up
- Hard & Semi Hard Anodised Parts for Longer Life
- Superb Chrome Fittings.



MX50
8mm Disc

MX200
8mm Disc

MX200R
8mm Disc

MX RACE
12mm Disc

Description	Caliper Only	System Price 1	Package Price 2
MX50	£91.93	£162.22	£196.83
MX200	£140.60	£219.55	£251.99
MX200R	£140.60	£314.82	N/A
MXRACE	£145.60	£221.30	£276.45

1. System Price includes caliper, hose and master cylinder. Filled with fluid and tested.
2. Package Price includes all of the above plus disc and carrier.



MX Master
Cylinder

MX Double
Master Cylinder

Seal Kits

Dot 5 Silicone
Fluid

Brake Pads

Aeroquip Hose

Description	Price
MX Master Cylinder	£89.61
MX Double Master Cylinder	£174.22
Aeroquip Hose	£23.79
MX Complete Seal Kit	£20.73
MX Caliper Seal Kit	£14.29
MX Master Cylinder Seal Kit	£7.21
1 Litre Dot 5 Silicone Fluid	£28.50 (no discount)
MX Pads (Med/Hard)	£8.90 per pair
MX Pads (Hard)	£9.20 per pair

Part No	Description	Price
MX01	MX Caliper Piston O'Ring	£4.07 each
MX02	MX Caliper Piston Wiper Ring	£2.61 each
MX03	MX Caliper Sealing O'Ring	£0.59 each
MX04	MX50/RACE Caliper Piston	£9.55 each
MX05	MX200 Caliper Piston	£9.55 each
MX07	MX50/RACE Caliper Bolts	£1.36 each
MX08	MX200 Caliper Bolts	£1.36 each
MX09	Caliper Blanking Screws	£1.09 each
MX10	MX Caliper Bleed Nipple	£1.89 each
MX11	MX50 Pad Retaining Pin	£3.40 each
MX12	MX50 Pad Retaining Spring	£4.22 each
MX15	MX200/RACE Pad Retaining Pin	£3.87 each
MX16	MX Pad Retaining Clip	£0.37 each
MX17	1/8 BSP Banjo Bolt	£5.48 each
MX17B	M8 X 1.25mm Banjo Bolt	£5.48 each
MX18	Copper Washer	£0.62 each
MX18B	Bonded Washer	£0.70 each
MX30	Master Cylinder Piston Lip seals	£2.31 each
MX31	MX Master Cylinder Piston	£6.18 each
MX32	MX Master Cylinder Return Spring	£2.89 each
MX33	MX Master Cylinder Piston Retainer	£4.33 each
KC46	MX Master Cylinder Dust Cover	£2.11 each
MX29	MX Master Cylinder Push Rod	£2.85 each
MX34	MX Master Cylinder Operating Arm	£5.54 each
MX41	MX Master Cylinder 8mm Clevis	£3.02 each
MX35	MX Reservoir Sealing O'Ring	£0.59 each
MX36	MX Fluid Reservoir	£10.55 each
MX43	MX Reservoir Fixing Plug	£2.20 each
MX37	MX Reservoir Spacer	£2.51 each
MX38	MX Reservoir Clamping Bolt	£0.34 each
MX40	MX Master Cylinder Blanking Plug	£0.70 each
MX60B	MX Master Cylinder Adapter	£1.80 each

The KC brake systems is one of the most reliable and progressive brakes on the market. Vary popular in Pro Kart and Cadet Racing this system offers great value. This is a manually adjusted system using our unique aluminium adjusters and not shims.

This brake is also available in a mechanical version which is used on rally karts, micro light aircraft and model cars.

Description	Price
KC Brake System Braided Hose	£138.00
KC Brake System Plastic Hose	£110.00
KC Caliper Braided Hose	£100.00
KC Mechanical Brake	£55.70
KC Caliper Plastic Hose	£79.00
KC Master Cylinder	£36.00
KC Brake Pads (Red)	£9.20
KC Brake Seal Kit	£16.16
Caliper Seal Kit	£9.21
M/Cyl Seal Kit	£6.95



Part No:	Description	Price
KC10	Piston O'Ring	£3.21 each
KC11	Piston Lip seal	£3.21 each
KC12	Caliper Piston Complete	£8.57 each
KC13	Aluminium Adjuster Pillars	£4.28 each
KC14	M10X90mm Bolts	£1.07 each
KC15	M10 Nuts & Washer	£0.60 each
KC16	Pad Retaining Screws	£2.23 each
KC17	Pad Retaining Springs	£1.07 each
KC18	Bleed Screw Assembly	£0.64
KC19	Plastic U Pipe	£5.55
KC20	Braided U Pipe	£17.50
KC21	90 degree Connector Plastic Hose	£2.25
KC22	Tee Piece Connector Plastic Hose	£3.50
KC23	90 Degree Connector Braided Hose	£2.88
KC24	Tee Piece Connector Braided Hose	£3.50
KC40	Master Cylinder Piston O'Ring	£1.60
KC41	Master Cylinder Piston Lip Seal	£3.84
KC42	Master Cylinder Piston Complete	£8.03
KC43	Master Cylinder Return Spring	£1.60
KC44	Master Cylinder Push Rod	£3.21
KC45	Master Cylinder Lever Arm	£3.75
KC46	Dust Cover	£2.09
KC47	Master Cylinder Filler Plug	£3.21

Part No:	Description	Price
KC60	Mech Piston	£1.90 each
KC61	Pad Return Spring	£1.60 each
KC62	Lever Arm	£3.95 each
KC63	Adjuster Screw	£1.33 each
KC64	6mm Roll Pin	£0.54 each
KC13	Adjuster Pillar	£4.28 each

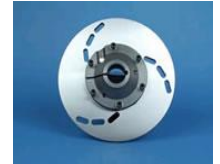
DISCS



DISCS



We manufacture a wide range of discs for race and rental karts. All our discs are precision ground to a superb finish. We make our own standard discs or we can manufacture discs to your drawing subject to a minimum order. All our standard discs are 200mm in diameter with a 76mm location. Discs are 6mm, 8mm or 12mm thick.



Plain | 6mm or 8mm
Thick 76mm Loc

Slotted 6mm or 8mm
Thick 76mm Loc

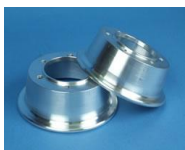
Slotted 6mm or 8mm
thick 100mm Loc

Plain or Slotted
70mm Loc

12mm Fully Ventilated 76mm Loc

Description	Price
Plain Steel 6mm x 200mm 76mm Location	£22.66
Plain Steel 8mm x 200mm 76mm Location	£22.66
Slotted Steel 6mm x 200mm 76mm Location	£24.93
Slotted Steel 8mm x 200mm 76mm Location	£24.93
Slotted Steel 6mm x 200mm 100mm Location	£24.93
Slotted Steel 8mm x 200mm 100mm Location	£24.93
Plain Steel 6mm x 200mm 70mm Location	£22.66
Plain Steel 8mm x 200mm 70mm Location	£22.66
Slotted Steel 8mm x 200mm 70mm Location	£24.93
Cast Iron 12mm x 200mm 76mm Location	£33.99

OTHER EQUIPMENT



Description	Price
Honda Engine Mounts	£9.60 each
Engine Mounts Clamps	£3.50 each
Split Wheels 45mm	£10.00 each
Split Wheels 65mm (minimum order applies)	£10.00 each
Split Wheels 90mm (minimum order applies)	£10.00 each
Front Tubes	£3.65 each £162.00 box of 50
Rear Tubes	£5.10 each £228.00 box of 50
Honda Engines GX120/160/200/240/270/340/390	POA



All our axle equipment is made from high quality heat treated aluminium. Whether it's for racing or rental karts our hubs and carriers are up to the task. Our circular type disc carriers are the strongest on the market and the heavy duty version comes with a grub screw to clamp it to the axle. The twin bolt mono rear hub is also popular with rental kart manufacturers as it clamps solidly to the axle.



Mono Rear Hub
50mm Long

Mono Rear Hub
Twin Bolt 65mm Long

Extended Mono Rear
Hub 100mm Long

Split Wheel Rear Hub

Split Wheel Front
Hub



Disc Carrier 76mm
Location Diameter

Circular Type Disc
Carrier

Circular Type Disc
Carrier Heavy Duty

Sprocket Carrier

Rally kart Hub

Description	Price
Mono Rear Hub 25/30/35mm	£10.00
Mono Rear Hub Twin Bolt 25/30/35mm	£12.10
Mono Extended Rear Hub 25/30/35mm	£14.50
Split Rear Hub 25/30/35mm	£10.00
Split Front Hub 17mm Bearings	£9.25
Spider Disc Carrier 25/30/35mm	£12.05
Circular Disc Carrier 25/30/35mm	£13.83
Circular Disc Carrier Heavy Duty 30mm	£13.83
Sprocket Carrier 25/30mm	£10.00
Rally Kart Hubs	£21.15

We stock all the above items in 25mm and 30mm. If you require these components to fit a 35mm axle we would require a minimum order of 50 pieces as we do not stock them.

We do specialise in supplying race and rental kart manufacturers in high volume. All components come with a 6mm key but can be manufactured with an 8mm key if required. All hubs come with clamping bolt and studs supplied.

AXLES



AXLES



All our axles are manufactured by us using high quality precision ground bar. Our axles are used by most of the manufacturers in the UK as well as being sort after in Europe and the USA.

We can manufacture axles to your specified drawing or we make our own standard axles which are compatible with most kart chassis.

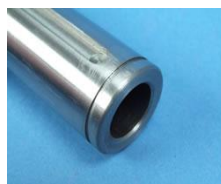
Our hollow axles have a wall thickness of 5.5mm giving maximum strength and superb flexibility. (PK = Pocketed key, SK = Standard key).

Solid

Description	Price
25mm x 970mm	£24.66
25mm x 1020mm	£24.66
30mm x 970mm PK	£35.70
30mm x 1020mm PK	£35.70
30mm x 1020mm SK	£26.00
30mm x 1068mm SK	£27.66
30mm x 1143mm Pro Kart	£33.65
30mm x 1020mm EN16T	£40.70

Hollow

Description	Price
30mm x 1020mm	£42.20
30mm x 1068mm	£42.20
30mm x 1143mm	£42.20
Copper 50mm x 1040mm	£94.99
50mm x 1040mm Soft	£50.00
50mm x 1040mm Med	£50.00
50mm x 1040mm Hard	£50.00



Description	Price
30mm Quick Release Bearing Carriers	£17.51
25mm Axle Bearings	£8.62
30mm Axle Bearings	£8.62
25/30mm Axle Circlips	£0.60
6mm x 350mm Axle Key	£1.50
8mm two Pegged Key	£2.24
8mm Three Pegged Key	£3.95

TYRES



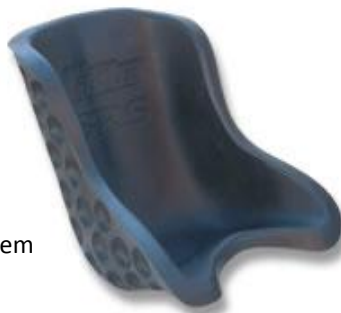
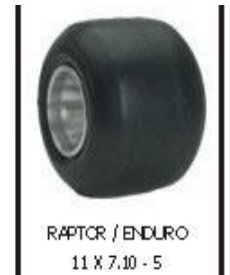
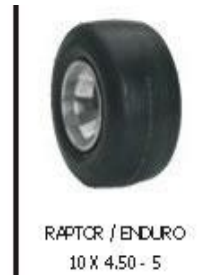
SEAT REDUCTION



The Raptor and Enduro stem from the high performance racing tires, which are high-grade technical products. This is shown by its modern appearance and the fact that these tires are 100% tubeless. Especially in situations where running costs must be kept under control, the Raptor and Enduro excel in exceptionally low mileage rates. Furthermore these tires are characterised by their long life span together with an acceptable dose of grip. The Raptor and Enduro represent the perfect balance between durability and price. Because of the consistent quality both the Raptor and the Enduro are used by renowned kart manufacturers, like the "OEM Tyre".

- 100% Tubeless.
- Low Mileage Rates.
- Ideal for concrete, tarmac and coated tracks.
- Superb balance between lifespan and grip.
- Ideally priced for rental kart tracks.

The range of application is very diverse, but is mainly focused on the in- and outdoor market as well as the rental market , which requires an affordable tyre.



Seat Reduction System



Rental Kart Steering Wheel

Description	Price
Front Maxxis Raptor Rental Kart Tyre	£15.20 no discount
Rear Maxxis Raptor Rental Kart Tyre	£17.20 no discount
Front Maxxis Enduro Rental Kart Tyre	POA
Rear Maxxis Enduro Rental Kart Tyre	POA
Caliba Seat Reduction System	£25.00 no discount
Caliba Rental Kart Steering Wheel	£16.30 no discount



Kart Components offer a full range of race suits made to a high quality. We specialize in supplying bulk orders to indoor or outdoor tracks with suits available in single layer hobby suits, two layer cordura suits and FIA CIK Level 2 Homologated suits. All suits are made to a high quality and are hardwearing. These suits will stand up to the enduring test the rental kart facility will bring. We have supplied many tracks in the UK, Europe and Middle East and pride ourselves on the level of service we provide. We can offer a full bespoke service giving the customer the choice of colours, style and embroidery. You can have your own company logo and web address put on the suits for a very professional look.



As well as suits we can also supply racewear accessories including balaclavas, gloves, rib protection vests, neck braces, rainsuits and boots. These items as well are available in a choice of colours and you also have the opportunity to put your own logo on these or just have them standard.

Description	Prices
Single Layer Hobby Suits	£31.00
Double Layer Cordura Suits	To order 50+ only
CIK FIA Level 2 Homologated Suits	£72.00
Balaclavas	£75.00 per 100 (minimum order)
Racing Gloves	£8.90
Rib Protection Vests	£32.00
Neck Braces Standard	£11.50
Neck Braces Special	£12.50
Rain Suits	£35.00
Boots	£32.00

***** Good discounts available on larger quantity orders *****


All the racewear accessories are available in red, blue or black.

If you would like a quote for your indoor or outdoor track please contact us at the email address below and we can advise and quote you on your personal racewear requirements.

NB: THIS PAGE IS EXEMPT FROM ANY DISCOUNT AGREED ON MANUFACTURED PRODUCTS.



These track barrier systems are better looking than the tyres or wooden fencing alternatives, and conveys a safe, professional image. Our variable height system offers total versatility in the formations it can create. S-shapes, circles, right angles, straight runs, clockwise, anti-clockwise, left turns, right turns - in fact anything you like

 KC500	Length 1350mm	Width 400mm	Height 300mm
 KC1000	Length 1000mm	Width 400mm	Height 500mm
 KC1300	Length 1300mm	Width 330mm	Height 360mm
 KC1500	Length 1500mm	Width 400mm	Height 500mm

Description	Average Price Per Meter
KC500 Barrier	P/A
KC1000 Barrier	P/A
KC1300 Barrier	P/A
KC1500 Barrier	P/A
Buffer Strip	P/A

*****Please email for a personalised quote for your track*****

Whatever your track formation, our track barrier system remains interlocked without any gaps, protrusions or obstacles, providing a solid all-in-one track wall for maximum safety.

The Benefits of our Track Barriers



- Increased Safety
- Customised Colours
- Minimises & Absorbs Impact
- Moulds to Curves
- Unique patented locking device
- Ease of assembly
- Can be filled with Water or Sand
- Heavy Duty Design
- Advertising Facility
- Buffer Strips available
- Manufactured in U.K.
- Produced in Virgin Quality Polyethylene
- Recyclable

If you would like a quote for your indoor or outdoor track please contact daniel@kartcomponents.com. Please state the length of your track and your location so we can give you an accurate shipping quote to go with the price of the barriers.

Tel: +44 (0)1494 452561 – Fax: +44 (0)1494 452867 – email: sales@kartcomponents.com